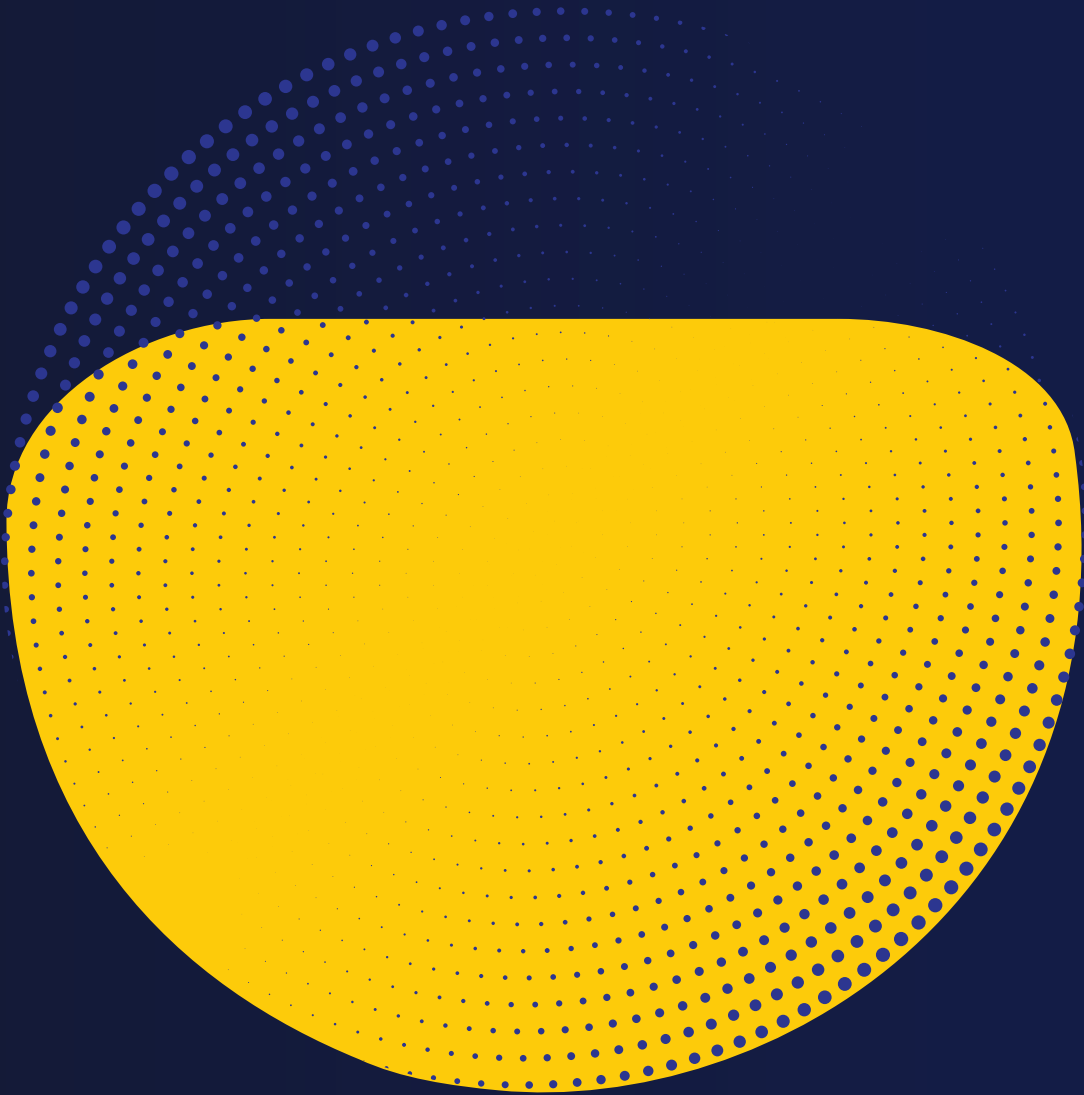




Patent-pending*



Contributing Towards Sustainability

At Taglus, we are evolving to give you solutions that are in harmony with the environment.



EMERGO EUROPE
Prinsessegracht 20
2514 AP The Hague
The Netherlands

TGA Health Safety
Regulation
Australia & NZ



ANVISA
Brazil & South America



Patent-pending*

Unique Dental Arch-Shaped Thermoforming Sheets

**CLEAR, BIOCOMPATIBLE
& DURABLE**

MAKE A DIFFERENCE WITH **TAGLUS ARCH**

30% LESS WASTAGE

During fabrication, a considerable amount of sheet around the thermoformed appliance is discarded and generates waste. With continuous research and development, we innovated an exclusive design that reduces the thermoplastic material consumption per appliance without affecting its clinical performance. The distinct design of Taglus Arch sheets represents our commitment to creating positive environmental changes.

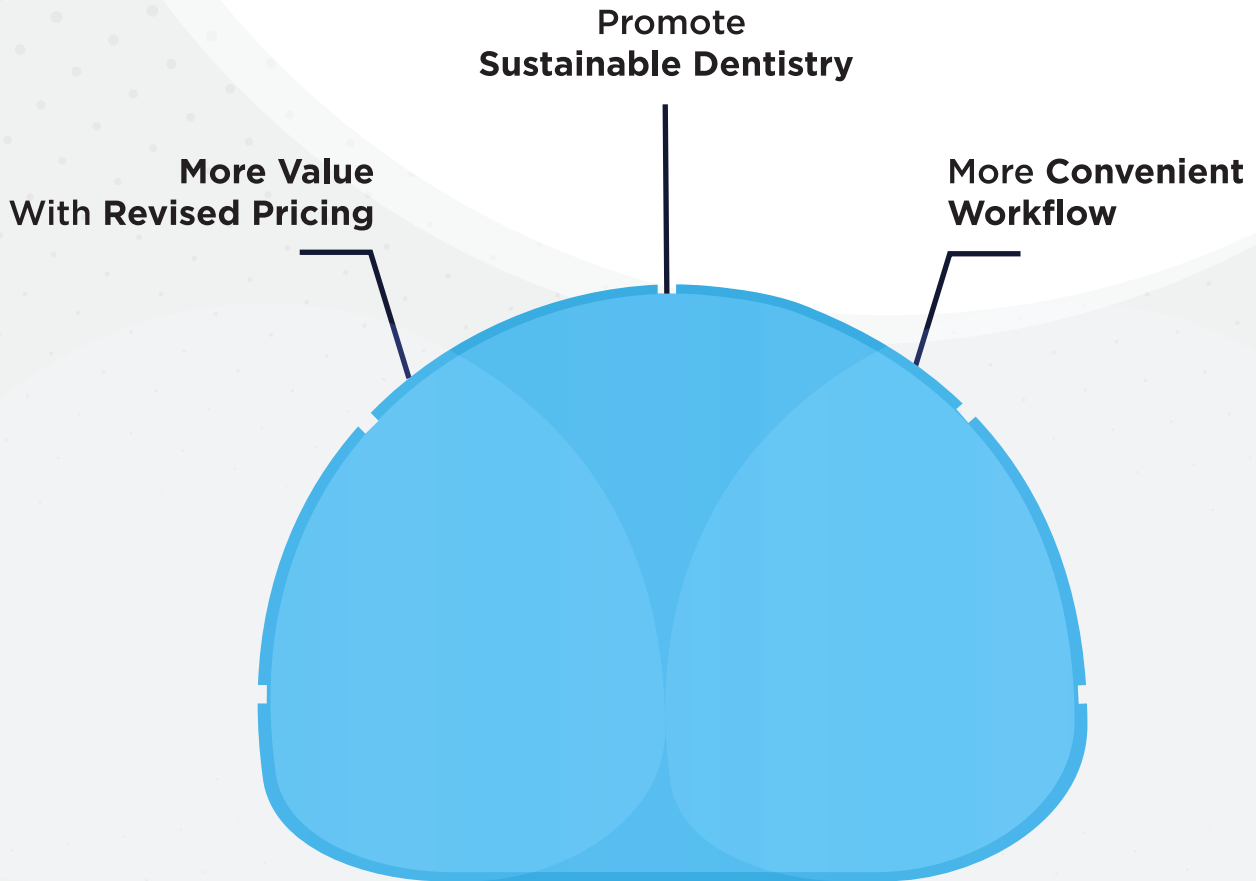
20% LESS PRICING

Even though the production process is more complex we have managed to reduce the price while keeping the same quality that we pride on for our Taglus customers

EASY RETRIEVABILITY

Another highlight of Taglus Arch sheets is the presence of 5 distinct slits at the periphery. They facilitate trimming off excess material post-fabrication and allow for convenient removal of the appliance from the model.

WHY UPGRADE TO TAGLUS ARCH?



Available In:



WORKING INSTRUCTIONS: HEATING & COOLING TIME WITH TAGLUS THERMOFORMING MACHINE

220° C/427°F

Heating Time in Seconds	15	16	17	18	19	20	21	22	23	24	25	26	27
Code	15	16	17	18	19	20	21	22	23	24	25	26	27
Heating Time in Seconds	28	29	30	31	32	33	34	35					
Code	28	29	30	31	32	33	34	35					

Cooling Time in Seconds	20	40	60	120	150	180	240	300	360
Code	1	2	3	4	5	6	7	8	9

Pressure should be set ABOVE 4 Bars. Temperature is at MACHINE default.

Taglus Sheets are protected by masking sheets on both sides, remove the protective sheets AFTER thermoforming and finishing.

Above timers are general guidelines only as each individual machines acts slightly different.

If the plastic does not adapt well to the model, add or reduce 5 seconds to heating time until the result is ideal.

If plastic form folds, result is NOT clear tray OR showbubble formation, recalibrate your heating element or reduce heating time until the result is ideal.

For any and ALL clinical and Lab related questions, do not hesitate to contact us at info@taglus.com

CERTIFICATIONS



info@taglus.com www.taglus.com

follow us on:

[@taglus](https://www.facebook.com/taglus) [taglus_official](https://www.instagram.com/taglus_official) [taglus](https://www.linkedin.com/company/taglus) [@taglus](https://www.youtube.com/channel/UC...)

Taglus, Taglus logo, Taglus Products are trademarks of Vedia Solutions and its affiliates in India. Taglus logo is a registered trademark of Vedia Solutions and its affiliates in India. Taglus Tuff & Taglus Arch is Patent Pending in India